



warren
powell-richards

**Wey River House, 22 High Street, Alton,
Hampshire GU34 1BN**

Luxury Apartments at Wey River House, 22 High Street, Alton, Hampshire GU34 1BN

Situated in the heart of the vibrant market town of Alton, close to St Lawrence Church, one of Alton's historic landmarks which has connections with the English Civil War. Steeped also in Jane Austen history, the town has varied shops in the High Street and Georgian architecture, with the neighbourhood also including the library, the Curtis Museum, Allen Gallery, community centre, inns, primary and senior schools, and Alton College. The town centre also includes Sainsbury's, an M&S Simply Food store, weekly market and open air events and further churches of several denominations. There is a Waitrose store beside the station. On the periphery, you will find the Convent School, Alton Sports Centre and 2 golf courses.

A choice of 14, one and two bedroom high specification luxury town centre apartments.

1st Floor – Apartments 1 and 2 (2 beds)

2nd Floor – Apartments 3 (2 beds), 4, 5, 6, 7, 8, 9, 10 and 11 (all 1 bed)

3rd Floor – Apartments 12 and 13 (1bed) and 14 (2 beds)

Newly installed fitted floor coverings throughout.

High-end Howdens kitchens fitted with built in appliances.

Allocated parking space to Apartments 1,2,3,4,5,6,10,11,12 and 14.

2 x cycle sheds at rear of property.

Front and back entrances with key pad.

Prices from £150,000



Fantastic first time purchase or investment opportunity.

Available to reserve off plan.

The apartments are due for completion end 2014/early 2015.

Each flat will benefit from a new 125 year lease.

Ground rent is estimated at £100 per annum

Service charges estimated at £500 per annum.

Directions

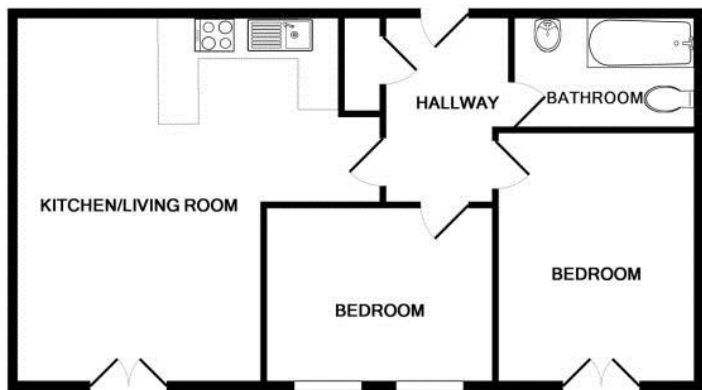
On foot from our Alton office at 78 High Street, proceed left handed along the High Street passing Iceland on the right. Continue until reaching Sheila Betts florist, the High Street entrance to the building will be on the left hand side. Vehicular access is on Vicarage Hill.



Viewing is by prior arrangement.
78 High Street, Alton, Hampshire, GU34 1EN
Sales: 01420 87379 Lettings: 01420 87409
Email: alton@wprhomes.co.uk
www.wprhomes.co.uk

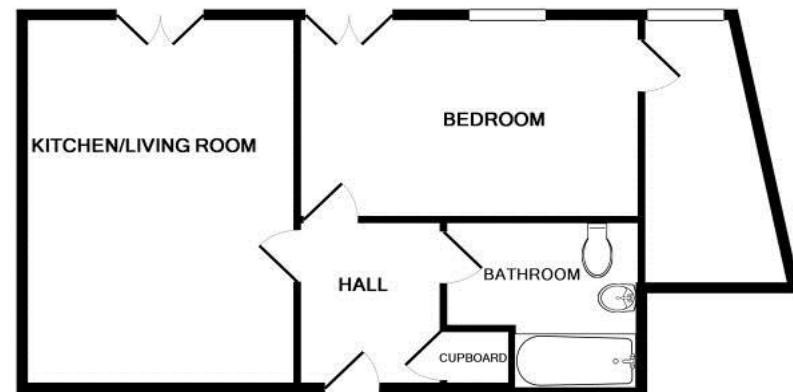
warren
powell-richards

These property details are set out as a general outline only and do not constitute any part of an Offer or Contract. Any services, equipment, fittings or central heating systems have not been tested and no warranty is given or implied that these are in working order. Buyers are advised to obtain verification from their solicitor or surveyor. Fittings and fixtures are not included unless specifically described. All measurements, distances and areas are approximate and for guidance only. Room measurements are taken to the nearest 10cm and prospective buyers are advised to check for any particular purpose e.g. fitted carpets and furniture. This material is protected by the laws of copyright. The owner of the copyright is Warren Powell-Richards Limited. This property sheet forms part of our database rights and copyright laws. No unauthorised copying or distribution.



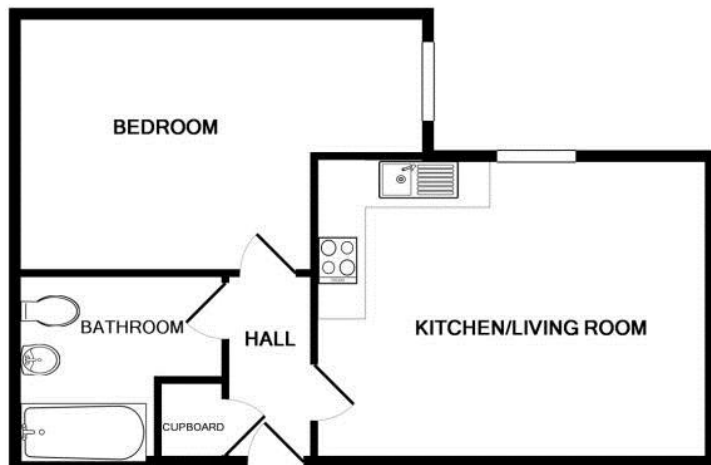
TOTAL APPROX. FLOOR AREA 635 SQ.FT. (59.0 SQ.M.)

Whilst every attempt has been made to ensure the accuracy of the floor plan contained here, measurements of doors, windows, rooms and any other items are approximate and no responsibility is taken for any error, omission, or mis-statement. This plan is for illustrative purposes only and should be used as such by any prospective purchaser. The services, systems and appliances shown have not been tested and no guarantee as to their operability or efficiency can be given
Made with Metropix ©2014



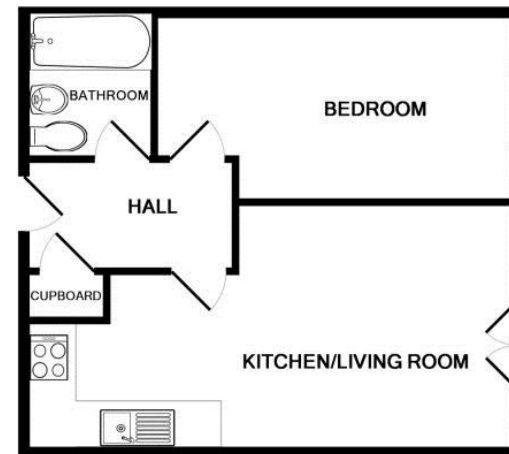
TOTAL APPROX. FLOOR AREA 495 SQ.FT. (46.0 SQ.M.)

Whilst every attempt has been made to ensure the accuracy of the floor plan contained here, measurements of doors, windows, rooms and any other items are approximate and no responsibility is taken for any error, omission, or mis-statement. This plan is for illustrative purposes only and should be used as such by any prospective purchaser. The services, systems and appliances shown have not been tested and no guarantee as to their operability or efficiency can be given
Made with Metropix ©2014



TOTAL APPROX. FLOOR AREA 495 SQ.FT. (46.0 SQ.M.)

Whilst every attempt has been made to ensure the accuracy of the floor plan contained here, measurements of doors, windows, rooms and any other items are approximate and no responsibility is taken for any error, omission, or mis-statement. This plan is for illustrative purposes only and should be used as such by any prospective purchaser. The services, systems and appliances shown have not been tested and no guarantee as to their operability or efficiency can be given
Made with Metropix ©2014



TOTAL APPROX. FLOOR AREA 420 SQ.FT. (39.0 SQ.M.)

Whilst every attempt has been made to ensure the accuracy of the floor plan contained here, measurements of doors, windows, rooms and any other items are approximate and no responsibility is taken for any error, omission, or mis-statement. This plan is for illustrative purposes only and should be used as such by any prospective purchaser. The services, systems and appliances shown have not been tested and no guarantee as to their operability or efficiency can be given
Made with Metropix ©2014